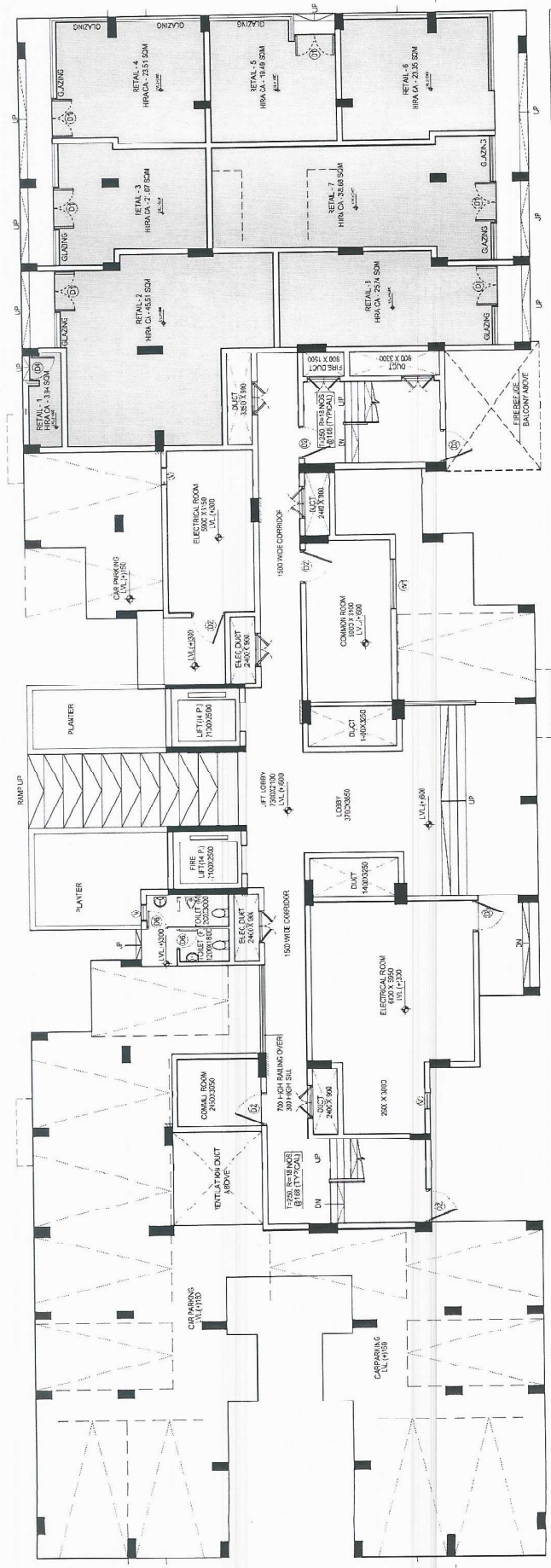


| TOWER/B      |               |
|--------------|---------------|
| RETAIL-1     | 34.23         |
| RETAIL-2     | 16.27         |
| RETAIL-3     | 8.33          |
| RETAIL-4     | 19.04         |
| RETAIL-5     | 20.72         |
| RETAIL-6     | 21.16         |
| RETAIL-7     | 165.52        |
| <b>TOTAL</b> | <b>165.52</b> |

TOWER - B RETAIL @ GROUND FLOOR





| NO.   | DESCRIPTION | AREA   |
|-------|-------------|--------|
| 1     | RETAIL 1    | 4,371  |
| 2     | RETAIL 2    | 2,071  |
| 3     | RETAIL 3    | 2,071  |
| 4     | RETAIL 4    | 1,819  |
| 5     | RETAIL 5    | 1,819  |
| 6     | RETAIL 6    | 1,819  |
| 7     | RETAIL 7    | 1,819  |
| 8     | RETAIL 8    | 1,819  |
| TOTAL |             | 22,730 |

TOWER - C RETAIL @ GROUND FLOOR

